

## 2.6t Electric Telehandler

These 2.6t rough terrain electric telehandler offers exceptional maneuverability with reduced noise and zero emissions, making it ideal for indoor applications. It can cut fuel expenses by up to 487% compared to its diesel counterpart.

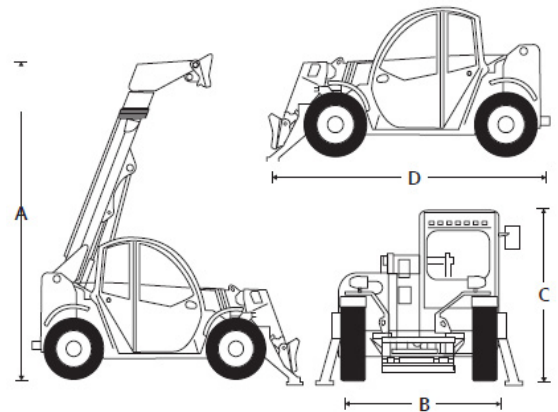
### Features

- Zero emission electric compact rough terrain telehandler with lithium-ion batteries.
- Full-time 4-wheel drive
- Fully enclosed cab
- Power assisted steering
- Proportional joystick
- Simple to operate and maintain
- 8 hrs of continuous use
- Charge using 3-phase outlet in 7.5 hrs or 80A in 4.3hrs or 110A in 3hrs or 200A in 1.7hrs



## 2.6t Electric Telehandler

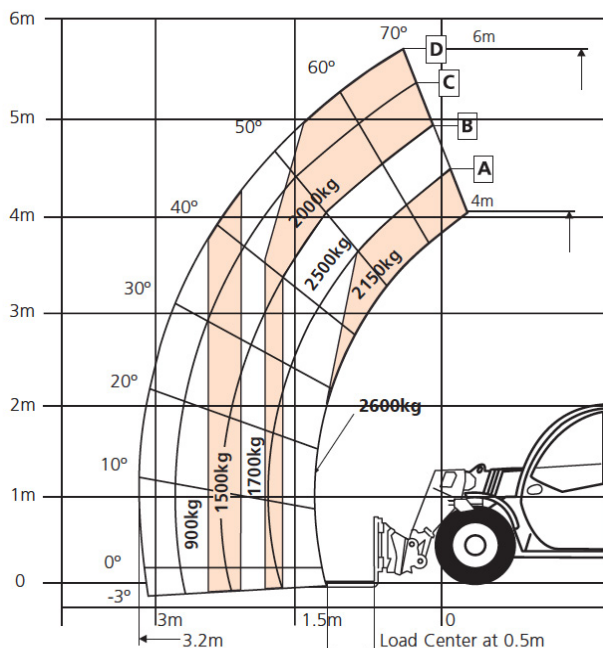
Capabilities		*
Max. lift capacity		2,600kg
Max. lift height (A)		5.79m
Max. forward reach		3.1m
Dimensions		
Overall width (B)		1.89m
Stowed height (C)		1.93m
Length to fork face (D)**		4.19m
Wheelbase		2.5m
Ground clearance		2200mm
Weight		
Weight		4,800kg
Performance		
Max. drive speed		12km/h
Raise/lower time		6.9/5 sec
Hydraulic flow (per minute)		80L
Hydraulic pressure		230bar
Hydraulic oil capacity		70L
Outside turning radius		3.25m
Tyres		12 x 16.5
Power		
Power source	Lithium-ion 80V 32kWh batteries	
Operating temperature	(-)20°C to (+)45°C	
Charger	on-board, single phase	



### Standard Features

- Lithium-ion batteries
- Full-time 4-wheel drive
- 4-wheel steer - selectable front, crab & coordinated
- Auxiliary hydraulic circuit on the boom
- Variable speed hydrostatic drive
- Fully enclosed cab with heat
- Proportional joystick
- Illuminated gauge and switch panels
- Colour LCD display with machine & engine diagnostics
- Adjustable suspension seat
- Fixed 1200mm carriage & 1200mm floating forks
- 2000 charging cycles/2 year lithium battery warranty
- 2 year parts & labour, 5 year structural warranty
- CE approved

### Load Chart



\* Preliminary specifications – confirm at time of ordering.

\*\*Length to fork face = length from carriage to counter weight.