

250t Electric Crawler Crane

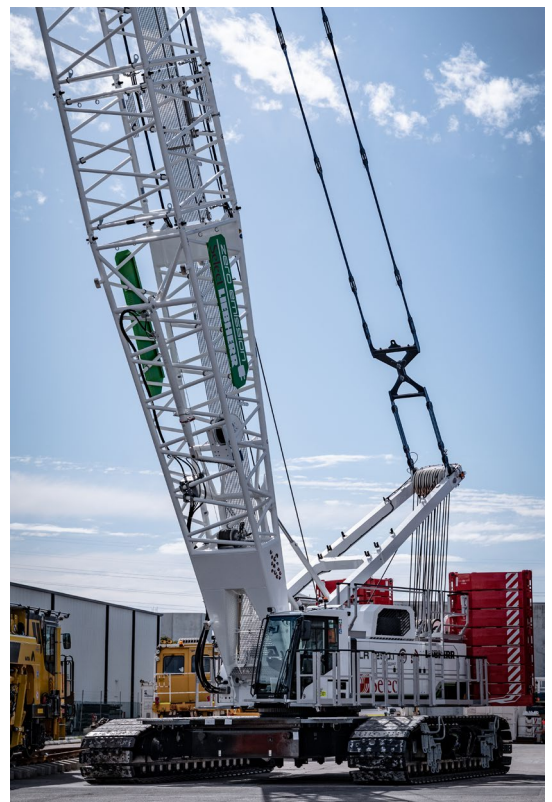
The Liebherr 250t electric crawler crane is the game-changer your site needs.

Quiet, emission-free, and packed with power, it's built to keep things moving sustainably. Its advanced lifting tech and responsive handling make every lift efficient and hassle-free. Plus, by eliminating diesel fuel, it reduces environmental risks and showcases your commitment to both top-tier performance and environmental responsibility.

Annual fuel saving	18,750 Liters
Annual carbon emissions abatement	50,000 KgCO _{2 eq}
Lifting operational (unplugged)	8 Hours
Range (unplugged)	600 Meters
Operational time (plugged in)	Indefinite

For more information:

- [Technical Datasheet](#)
- [Case Study](#)
- [Crane In Action](#)



250t Electric Crawler Crane

Charging

Connection Type (Crane)	DS6
Power Supply	3 PHASES + N + PE TN
Voltage Range	360V to 440V (AC)
Frequency Range	50hz to 60hz
Charging Current	63A or 32A
Cables Supplied	<ul style="list-style-type: none"> ■ 3m adaptor cable of 125A CEE coupling on 63A CEE plug ■ 3m adapter cable of 63A CEE coupling on 32A CEE plug ■ 3x 10m cables <p>Any additional cables to be provided by site.</p>
Charging Times	<ul style="list-style-type: none"> ■ 32Amp: 9hr (standard supply) ■ 63Amp: 4.5hr (standard supply) recommended

How to Charge



Small mains supply from grid, depending on machine use:

16-32 A are sufficient
(recommended)

Battery container

Genset

Powered by H2, HVO
or E-Fuels

250t Electric Crawler Crane

Charging: Using Battery Energy Storage System

Why Battery Energy Storage System to charge the Electric Crane?

- **Rapid Charging:** Charge your electric crane from 40% to 100% in under 2 hours with a 63A charging cable.
- **Reduced Downtime:** Keep your crane operational with minimal disruption.
- **Eco-Friendly:** Say goodbye to noisy generators and harmful emissions.

Successful Trial at Select:

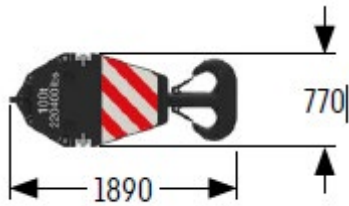
- In August 2023, Select proved the Energy Storage System's capability in the field.
- Expertly modified Energy Storage System for seamless integration with the electric crane.
- Calibration ensures a swift, generator-free recharge.

Read more about the case study [here](#)



250t Electric Crawler Crane

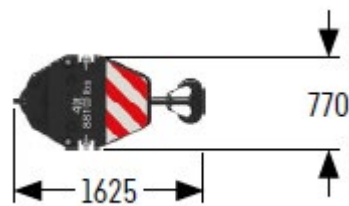
Pulley Block with Additional Weights / Load Hooks



100t pulley block - 5 pulleys

Width: 754 mm

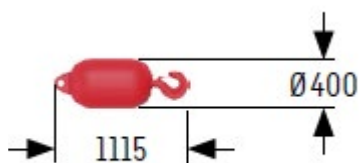
Weight: 1,300/1,800/2,300 kg



40t pulley block - 1 pulleys

Width: 490 mm

Weight: 700/1,100/1,500 kg



12.5t load hook

Weight: 600 kg

250t Electric Crawler Crane

Load Capacities with Main Boom (max 74-86m)

Load capacities in (t) with 82.3t rear counterweight and 36t carbody counterweight

Radius (m)	Boom length (m)											
	20	26	32	38	44	50	56	62	68	74	80	86
6.2						102.3						
7					117.5	101.4	86.4	72.1				
8				124.8	112.6	96.9	83.4	71.5	59.1	49.8		
9			118.3	111.9	104.6	93.0	80.4	68.1	57.7	49.5	41.2	34.0
10		110.7	105.1	99.8	95.0	88.1	77.1	65.7	56.0	48.1	40.7	33.8
14	72.0	72.0	71.8	69.0	66.3	63.7	61.2	58.2	50.0	43.2	37.6	31.5
20	44.3	44.4	44.3	44.0	43.7	42.9	41.4	39.9	38.5	36.1	32.4	28.2
22		39.1	39.0	38.7	38.4	38.0	37.1	35.7	34.4	33.1	30.6	26.9
24		34.7	34.6	34.3	34.1	33.7	33.3	32.2	31.1	29.9	28.7	25.8
26		31.1	31.1	30.8	30.5	30.1	29.7	29.2	28.1	27.0	26.0	24.9
32			23.2	23.0	22.7	22.3	22.0	21.5	21.1	20.5	19.6	18.7
38				17.8	17.6	17.2	16.8	16.4	16.0	15.5	15.1	14.3
44					13.8	13.5	13.2	12.8	12.4	12.0	11.6	11.1
46						12.5	12.2	11.8	11.4	11.0	10.6	10.1
48						11.7	11.3	10.9	10.5	10.1	9.6	9.2
50						10.8	10.5	10.1	9.7	9.2	8.8	8.4
55							8.7	8.3	7.9	7.4	7.0	6.5
60								6.8	6.4	5.9	5.5	5.1
65									5.1	4.7	4.3	3.8
70										3.6	3.2	2.7
75											2.2	

Load capacities in (t) with 72.3t rear counterweight and 36t carbody counterweight

Radius (m)	Boom length (m)											
	20	26	32	38	44	50	56	62	68	74	80	86
4.5	219.1*	199.9										
5	216.9*	199.9	173.7									
6	194.2	180.1	165.5	143.5	122.1							
7	168.5	155.8	144.9	135.2	117.5	101.4	86.4	72.1				
8	142.0	132.6	124.4	116.9	110.3	96.9	83.4	71.5	59.1	49.8		
9	122.5	115.2	108.8	102.9	97.5	92.5	80.4	68.1	57.7	49.5	41.2	34.0
16	54.9	54.9	54.8	54.4	52.3	50.3	48.4	46.5	44.8	41.3	35.8	30.2
18	46.8	46.8	46.6	46.3	45.8	44.1	42.4	40.8	39.3	37.8	34.4	29.2
20	40.4	40.5	40.4	40.1	39.8	39.0	37.6	36.2	34.8	33.5	32.2	28.2
26		28.2	28.2	27.9	27.6	27.2	26.9	26.3	25.3	24.2	23.2	22.2
28			25.4	25.1	24.9	24.5	24.1	23.7	23.0	21.9	21.0	20.0
32			20.9	20.7	20.5	20.1	19.7	19.3	18.9	18.2	17.3	16.4
34				18.9	18.7	18.3	17.9	17.5	17.1	16.6	15.8	14.9
38				15.9	15.7	15.3	15.0	14.5	14.1	13.7	13.2	12.3
44					12.2	12.0	11.7	11.2	10.8	10.4	10.0	9.3
46						11.1	10.7	10.3	9.9	9.5	9.0	8.5
50						9.4	9.1	8.7	8.3	7.8	7.4	7.0
55							7.4	7.0	6.6	6.2	5.8	5.3
60								5.6	5.2	4.8	4.4	3.9
65									4.0	3.6	3.2	2.7
70										2.6	2.2	

*Load capacities with 62.3t rear counterweight and 36t carbody counterweight